

# 1 Myo Kinisi

The Myo Kinisi is a myoelectric prosthetic hand, externally controlled by the electric signals naturally generated by the user's muscles, and powered using a high-capacity battery system hosted within the forearm.

It is suitable for patients at levels equivalent to transradial and more proximally, in both unilateral and bilateral applications. The hand is available in three sizes and four wrist variations, to suit a broad range of clinical presentations.

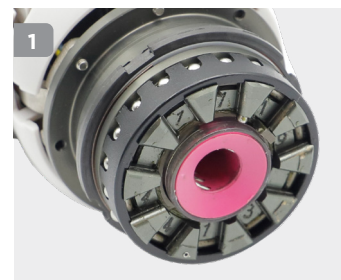
As the user varies their muscle intensity, the Myo Kinisi hand will respond with a proportionate hand speed and grip force which can be configured using the Steeper Configuration Device.

For training and more details on how to order visit [www.upskillbysteep.com](http://www.upskillbysteep.com)



## Features and Benefits

- Three hand sizes available: 7¼, 7¾ and 8¼
- Auto-grip feature enables the user to have secure grip on unstable objects
- Supercapacitor technology provides efficient control and power conservation
- Steeper Configuration Device allows prosthetists to configure to user's exacting requirements (p.26)
- Durable PVC hand shell and reinforced Elegance Plus cosmesis, designed specifically for use with the Myo Kinisi with enhanced detailing
- Five control modes
- Safety release mechanism for patient reassurance
- User-friendly function button located on the thumb to turn the hand on/off
- Operating voltage 7.2V DC



## Technical Information: Myo Kinisi with Quick Disconnect Wrist

(Performance figures have been measured with a fitted hand shell)

Size	Compatible wrist sizes	Speed when closing from fully open	Grip Strength	Max Opening Width	Weight with Inner Glove	Length (Base Hand Shell to Thumb Tip)
7¼	45mm (1¾")	220mm/s	c.90N	100mm (3.9")	530g (1lb 2oz)	170mm (6.7")
7¾	50mm (2")	220mm/s	c.90N	100mm (3.9")	550g (1lb 2oz)	170mm (6.7")
8¼	54mm (2½")	220mm/s	c.90N	100mm (3.9")	565g (1lb 3oz)	175mm (6.89")

### Myo Kinisi - Quick Disconnect Wrist

Part Number	Size	Left/Right	Description	Wrist Unit Option	Male Glove Number	Female Glove Number
1 KIN725LQD	7¼	Left	Adolescent/Adult	45mm (1¾")	306	304
KIN725RQD	7¼	Right	Adolescent/Adult	45mm (1¾")	307	305
KIN775LQD	7¾	Left	Adult	50mm (2")	302	312
KIN775RQD	7¾	Right	Adult	50mm (2")	303	313
KIN825LQD	8¼	Left	Adult	54mm (2½")	300	N/A
KIN825RQD	8¼	Right	Adult	54mm (2½")	301	N/A

### Myo Kinisi - Friction Wrist

Part Number	Size	Left/Right	Description	Wrist Unit Option	Male Glove Number	Female Glove Number
2 KIN725LFW	7¼	Left	Adolescent/Adult	50mm (2")	306	304
KIN725RFW	7¼	Right	Adolescent/Adult	50mm (2")	307	305
KIN775LFW	7¾	Left	Adult	54mm (2½")	302	312
KIN775RFW	7¾	Right	Adult	54mm (2½")	303	313
KIN825LFW	8¼	Left	Adult	54mm (2½")	300	N/A
KIN825RFW	8¼	Right	Adult	54mm (2½")	301	N/A

### Myo Kinisi - North American Thread (½ x 20 TPI)

Part Number	Size	Left/Right	Description	Wrist Unit Option	Male Glove Number	Female Glove Number
3 KIN725LNA	7¼	Left	Adolescent/Adult	45mm (1¾")	306	304
KIN725RNA	7¼	Right	Adolescent/Adult	45mm (1¾")	307	305
KIN775LNA	7¾	Left	Adult	50mm (2")	302	312
KIN775RNA	7¾	Right	Adult	50mm (2")	303	313
KIN825LNA	8¼	Left	Adult	54mm (2½")	300	N/A
KIN825RNA	8¼	Right	Adult	54mm (2½")	301	N/A

### Myo Kinisi - European Thread (M12 x 1.5mm)

Part Number	Size	Left/Right	Description	Wrist Unit Option	Male Glove Number	Female Glove Number
4 KIN725LEU	7¼	Left	Adolescent/Adult	45mm (1¾")	306	304
KIN725REU	7¼	Right	Adolescent/Adult	45mm (1¾")	307	305
KIN775LEU	7¾	Left	Adult	50mm (2")	302	312
KIN775REU	7¾	Right	Adult	50mm (2")	303	313
KIN825LEU	8¼	Left	Adult	54mm (2½")	300	N/A
KIN825REU	8¼	Right	Adult	54mm (2½")	301	N/A